



Taller Industrial Metalúrgico Antonio, C.A.
CORPORATE BROCHURE

TABLE OF CONTENT

1	ABOUT US	2
1.1	Mission	3
1.2	Vision	3
1.3	Values	3
1.4	Quality policies	3
2	PLANT OVERVIEW	4
3	INFRASTRUCTURE	
3.1	Steel fabrication workshop	5
3.2	Mechanic and hydraulic maintenance workshop	6
3.3	ECM Electrochemical machining workshop	7
3.4	Maintenance workshop of briquetting plant components	8
3.5	Machining workshop	9
3.6	Surface preparation workshop	10
3.7	Main warehouse	11
4	STEEL FABRICATION	12
4.1	Some of our steel fabrication	13
5	FIELDWORK	16
5.1	Maintenance shutdown	17
5.2	Midrex plants maintenance	18
5.3	Maintenance to briquetting plants	19
5.4	Some undertaken fieldwork	20
6	BRIQUETTING MACHINES SERVICES	39
6.1	Briquetting rollers maintenance	43
6.2	Hydraulic motors maintenance	44
6.3	Electrochemical machining	45
6.4	Test bench for hydraulic motors	46
6.5	Other services / Spares supply	48
7	REFURBISH OF HYDROELECTRIC PLANTS	49
7.1	Turbines	50
7.2	Generators	51
7.3	Auxiliary services	52
7.4	Hydromechanical system assembly	53
7.5	Powerhouse refurbish - Macagua	54
8	SURFACE PREPARATION	55
9	LIFTING AND TRANSPORT OF SPECIAL LOADS	56
9.1	Some of our cranes	57
10	ROTATING EQUIPMENT MAINTENANCE	58
11	MAIN MACHINERY AND EQUIPMENT	59
12	SOME UNDERTAKEN WORK	60
13	OUR CLIENTS	61
14	ENVIRONMENTAL SAFETY AND HEALTH	62
15	QUALITY CONTROL	63
16	CONTACT INFORMATION	64



1 | ABOUT US

We were founded in 1974 with an initial purpose of providing services for the manufacture, repair and assembly of metal structures and boilermaking. Shareholders and workers commitment with the company, region and nation motivated us to accomplish through the last decade, continuous investments allowing us to expand, achieving new productive and capacities developments and reaching the highest industrial standard requirements.

This transformation of the company in a group, currently allows us to provide clients with overall solutions, satisfying the spectrum and diversity of their needs.

Our installed production capacity is for 500 ton/mon, in an area of 82.600 m², of which 17.300 m² are covered area.

1.1 MISSION

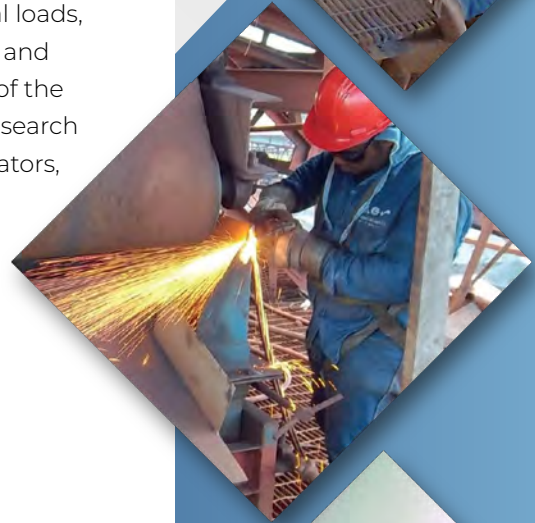
To offer overall quality solutions, through our services: engineering, manufacturing, electrochemical machining, surface preparation, lifting and transport of special loads, assembly, maintenance and refurbish of industrial machinery and plants, adapting in a versatile and agile manner to the needs of the market, supported by our human talent, infrastructure and research and development to generate benefits to our clients, collaborators, employees and shareholders.

1.2 VISION

To be leaders in integrated industrial services at regional and nationally, expanding as well to the international market.

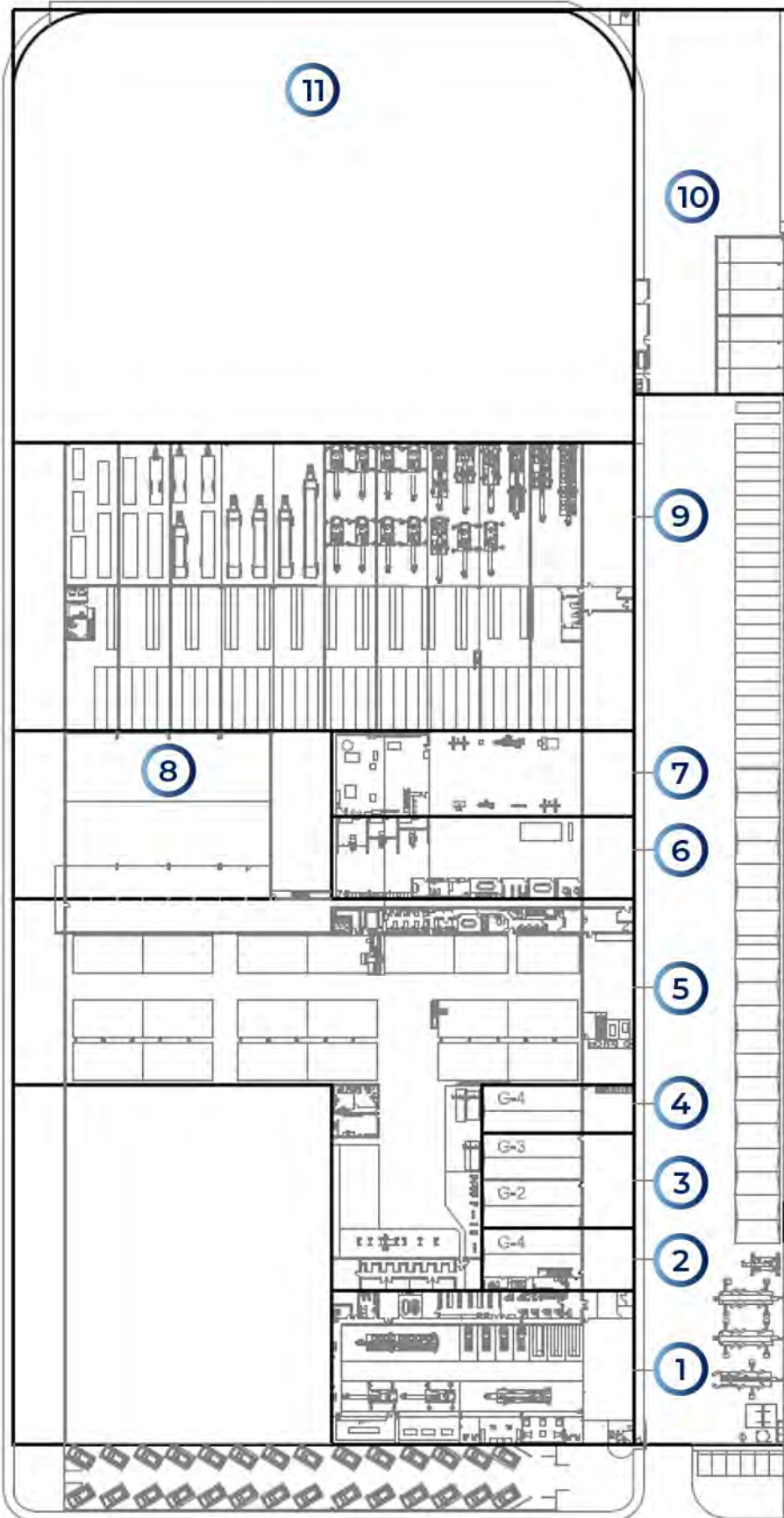
1.3 ORGANIZATIONAL VALUES

- Continuous improvement
- Quality and excellence
- Safety
- Ethics
- Planning, order and organization
- Responsibility
- Commitment
- Constancy
- Respect
- Teamwork



1.4 QUALITY POLICIES

We are committed to fully meet the needs of customers, complying with their requirements and specifications, through skilled staff and motivated towards continuous improvement and efficiency of the quality management system.



2 | PLANT OVERVIEW

- ① Mechanical and hydraulic maintenance workshop
- ② Electrical maintenance workshop
- ③ Rotating equipment maintenance workshop
- ④ Manufacturing workshop warehouse
- ⑤ Manufacturing workshop
- ⑥ Maintenance workshop of briquetting plant components
- ⑦ ECM Electrochemical machining workshop
- ⑧ Machining workshop
- ⑨ Main warehouse
- ⑩ Surface preparation workshop
- ⑪ Open assembly area

3 | INFRASTRUCTURE

3.1 Manufacturing workshop

Production area: 4200 m2 (3200 m2 covered)

Office area: 1000 m2.

Bridge crane: 10 ton.

Jib cranes: 1.5 ton (Qty 10)

Shearing, rolling and bending machines, hydraulic press, electric and diesel welding machine, plasma cutting equipment with scanner and automatic cut-off saw.



3 | INFRASTRUCTURE

3.2 Mechanic and hydraulic maintenance workshop

Covered production area: 1500 m²

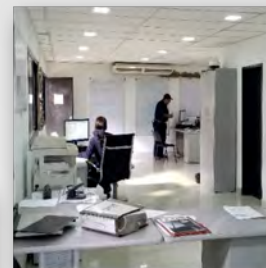
Office area: 350 m²

Maintenance and repair of mobile equipment and industrial facility machinery.

Jib cranes: 1.5 ton (Qty 10).

Automatic vehicle elevator.

Maintenance of electric parts and hydraulic cylinders.



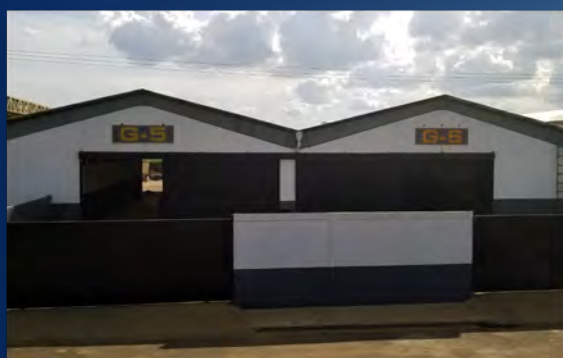
3 | INFRASTRUCTURE

3.3 ECM Electrochemical machining workshop

Production area: 1000 m2.

Office area: 130 m2.

Briquetting machine segment machining and re-machining
2 horizontal electrochemical machines for 1010
and 1440 mm rollers diameters.



3 | INFRASTRUCTURE

3.4 Maintenance workshop of briquetting plant components

Covered production area: 1000 m².

Office area: 130 m².

General maintenance of briquetting rollers, repair of screw feeders, spare parts supply, cylinders and hydraulic motors.

Bridge crane: 20 ton

Jib cranes: 3 ton (Qty. 3)



3 | INFRASTRUCTURE

3.5 Machining workshop

Covered production area: 2000 m2.

Office area: 130 m2

Machining work

Bridge crane 5 tons.

Lathe 6 m length between centers and 3 m swing over gap

Lathe 6 m length between centers and 1.5 m swing over bed

Moving column milling machine with table dimension of 9 m

Boring machine with a table travel of 3 m



3 | INFRASTRUCTURE

3.6 Surface preparation workshop

Production area: 2000 m² (500 m² covered)

Office area: 70 m².

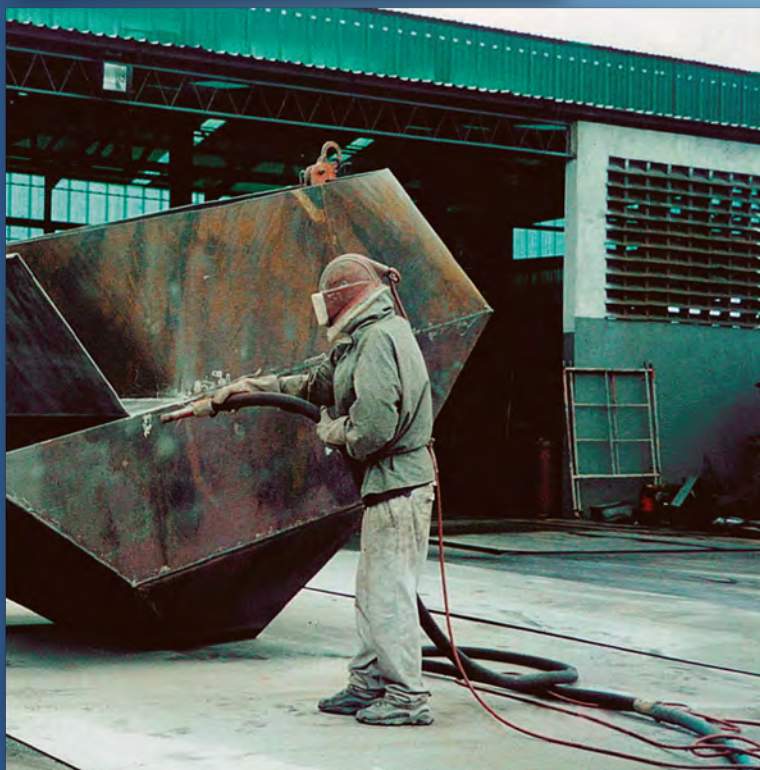
Sand blasting and painting.

Air compressors of 1000 cfm, 950 cfm, 250 cfm and 170 cfm.

High pressure paint application system.

Compressed air tank

100 m³ of covered sand storage area.



3 | INFRASTRUCTURE

3.7 Main warehouse

Covered storage area: 5700 m².

Office area: 100 m²



4 | STEEL FABRICATION

We design and manufacture metal structures for all types of industrial or commercial projects. Our engineering department has professionals in structural calculation and civil works, conforming into an ideal team to meet a variety of requirements, such as: industrial buildings, warehouses, ovens, hangars, castings, special decks, barges, mezzanines, piping, ductwork, runways, containers, walkways, overhead tanks, buildings with bases in metal structure, structures for bridges, cutting, bending and turning of sheets in general.



4 | STEEL FABRICATION

4.1 Some of our steel fabrication

- A. Suction tanks
- B. Air ducts
- C. Radial furnace
- D. Cooling towers
- E. Wash tank



4 | STEEL FABRICATION

4.1 Some of our steel fabrication



GUARDIAN®

Guardian de Venezuela

Design and manufacture of hydraulic lift pallet



4 | STEEL FABRICATION

4.1 Some of our steel fabrication



Loma de Niquel
Manufacture of colling panels



5 | FIELDWORK

Through the industrial assembly service, we have responded to the needs of the construction market and the commissioning and maintenance of facilities, ranging from the engineering of the process to the installation, under the EPC model (Engineering, procurement, construction, testing and start up).



5 | FIELDWORK

5.1 Maintenance shutdown

We perform maintenance at scheduled annual shutdowns. We have skilled workforce, equipment, tools, lifting units and transportation, which allow us to execute the work in time and form in order to maintain the proper operation of the equipment, facilities and infrastructure of the customers, reducing operational costs and prolonging its life to provide an excellent comprehensive maintenance service.

Recent additions put us in capacity to completely manage major shutdowns, involving its definition, technical specifications, execution, testing and commissioning of equipment and facilities.

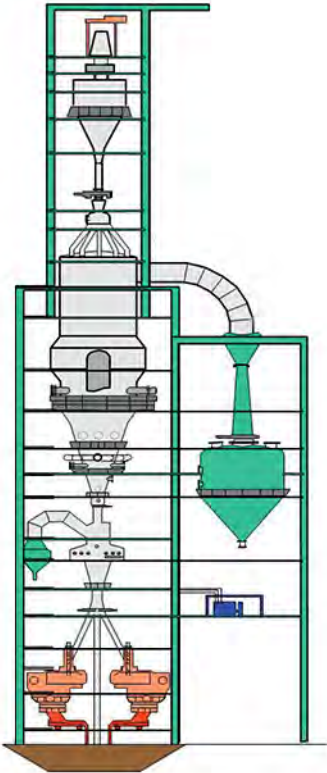
- Logistics
- Planning
- Tracking
- Critical route
- On time fulfillment



5 | FIELDWORK

5.2 Midrex plant maintenance

Supply, manufacture, installation and maintenance of all the equipment, and parts that comprise the process of the whole plant.



5 | FIELDWORK

5.3 Maintenance to briquetting machines

Inspection, testing, diagnosis, spare parts supply, repair, complete assembly and starting of briquetting machines.

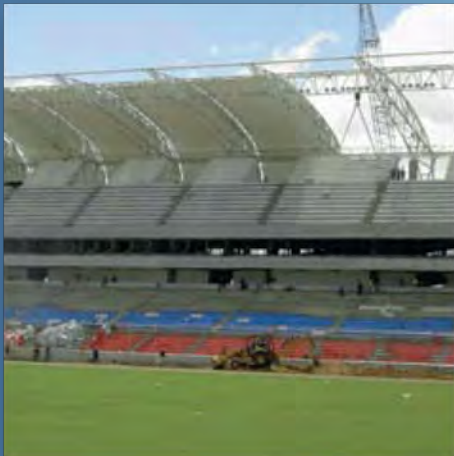


5 | FIELDWORK

5.4 Some undertaken fieldwork



ICA | Gobernación de Bolívar
Construction of Cachamay stadium
Copa América 2007



5 | FIELDWORK

5.4 Some undertaken fieldwork



Alcasa | FLSmidth

Installation of alumina direct feed system



5 | FIELDWORK

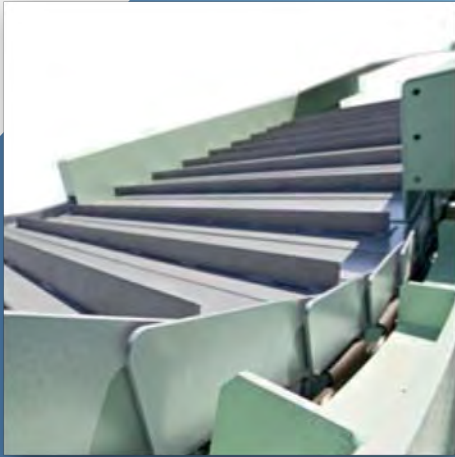
5.4 Some undertaken fieldwork



CVG FERROMINERA ORINOCO

Ferrominera Orinoco

Manufacture and assembly of pan conveyor system



5 | FIELDWORK

5.4 Some undertaken fieldwork



Venprecar
Repair and installation
of process gas compressor



5 | FIELDWORK

5.4 Some undertaken fieldwork



Comsigua

Replacement of loading system TK-F98



5 | FIELDWORK

5.4 Some undertaken fieldwork



Comsigua

Manufacture and installation of rock ladder TK-F 01.3



5 | FIELDWORK

5.4 Some undertaken fieldwork



Comsigua

Coating of top gas off take



5 | FIELDWORK

5.4 Some undertaken fieldwork



Comsigua

Replacement of the reformer pipes



5 | FIELDWORK

5.4 Some undertaken fieldwork



Comsigua

Installation of bundle



5 | FIELDWORK

5.4 Some undertaken fieldwork



Comsigua

Replacement of intermediate burdenfeeder BF-H06



5 | FIELDWORK

5.4 Some undertaken fieldwork



Comsigua

Replacement of the catalytic pipes in the reformer



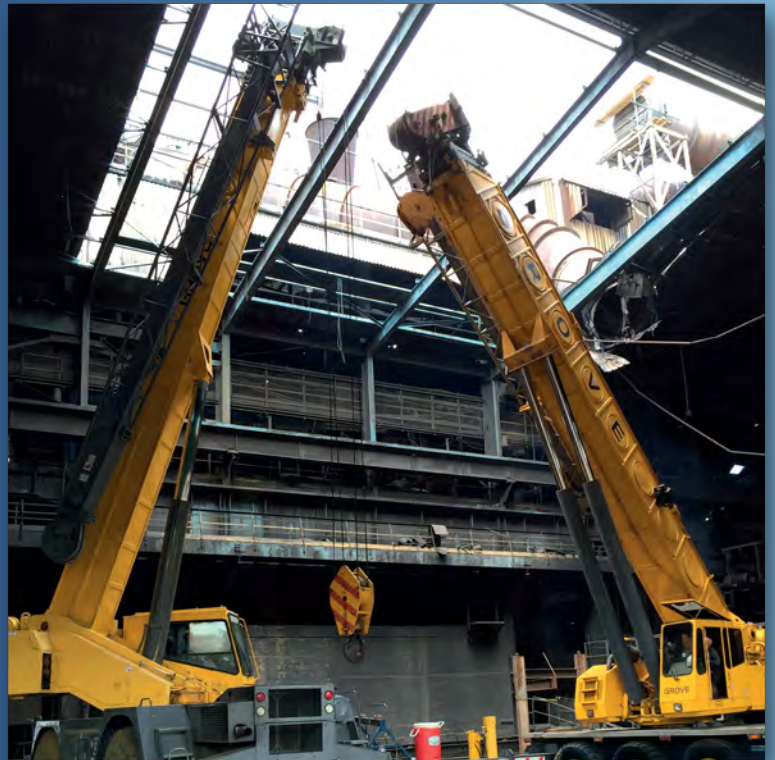
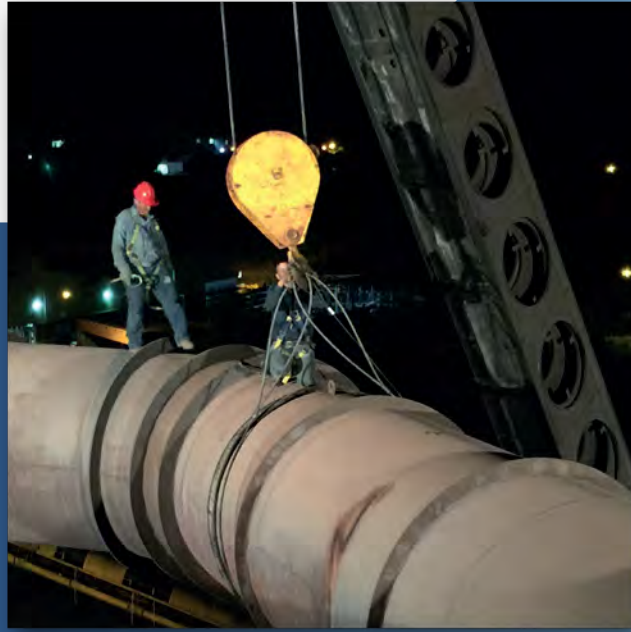
5 | FIELDWORK

5.4 Some undertaken fieldwork



Ferrovén

Replacement of ductwork



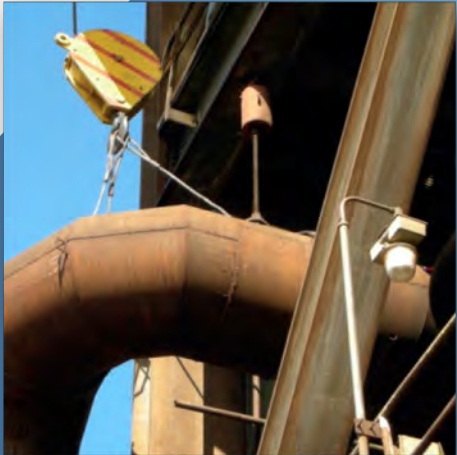
5 | FIELDWORK

5.4 Some undertaken fieldwork



Comsigua

Retubing operation 900-PWR001-C1



5 | FIELDWORK

5.4 Some undertaken fieldwork



Comsigua

Oxide day bin (Repair MSD)



5 | FIELDWORK

5.4 Some undertaken fieldwork



Comsigua

Cooling tower installation



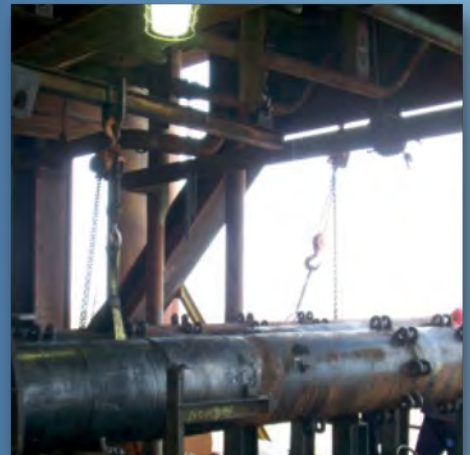
5 | FIELDWORK

5.4 Some undertaken fieldwork



Comsigua

Repair of Intermediate burdenfeeder
BF-H06

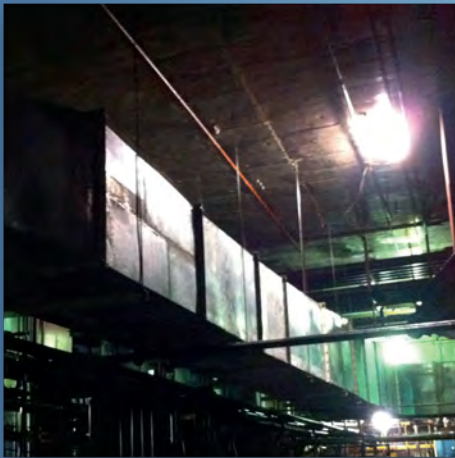
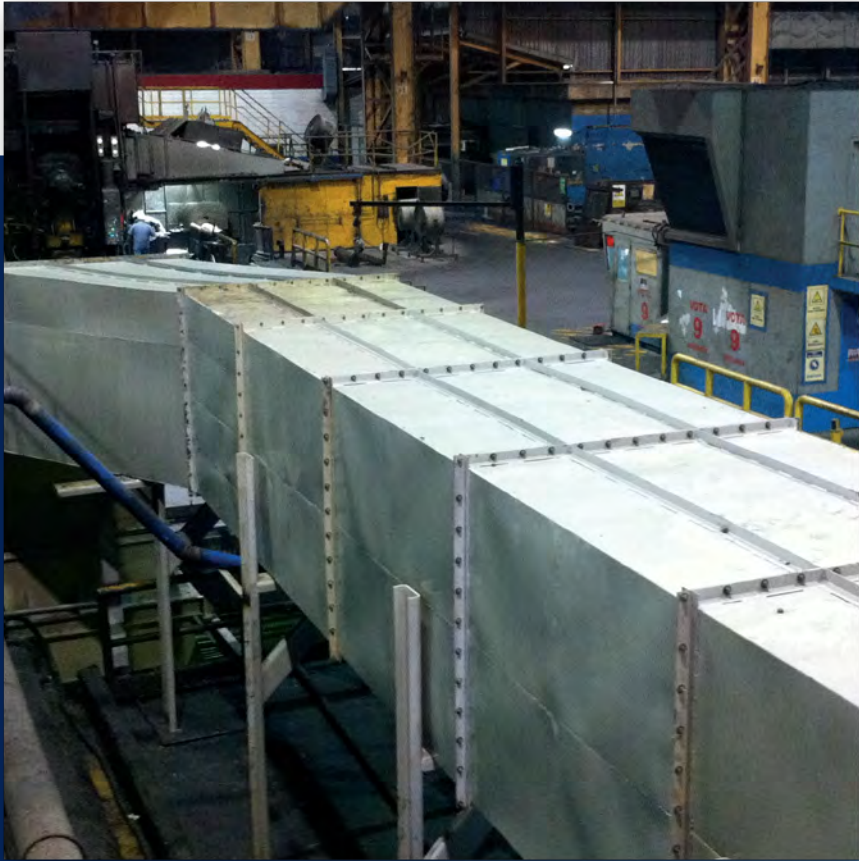


5 | FIELDWORK

5.4 Some undertaken fieldwork



Sidor
Installation of fresh air system
Tandem II



5 | FIELDWORK

5.4 Some undertaken fieldwork



Proppants de Venezuela

Calciner installation



5 | FIELDWORK

5.4 Some undertaken fieldwork



Proppants de Venezuela

Ball mill instalation



6 | BRIQUETTING MACHINES SERVICES



TIMACA in its constant growth and continuous improvement has made in recent years strategic agreements with important foreign companies. Our purpose is to offer a better service and quality to our customers as well as to generate new alternatives to the different needs and requirements of the national industry.

We are certified suppliers by the company SODALIS, one of the main suppliers at a global level of technology, equipment, spare parts and services for the briquetting industry.

We provide the best maintenance service to the entire line that encompasses the briquetting process. We specialize in the briquetting roller segment disassembly, parts and components replacement, torqueing, hydrostatics testing, quality controls and assembly.



6 | BRIQUETTING MACHINES SERVICES

Our professional and technical capacity has positioned us as the main company for mechanical maintenance of briquette plants throughout the country.

In our client portfolio are found the five Briquetting plants of Guayana:

- Venprecar
- Comsigua
- Matesi
- Orinoco Iron
- Ferrominera



6 | BRIQUETTING MACHINES SERVICES

A. Electrochemical workshop

B. Mobile column boring machine Juaristi MDR-110 cm with a table dimension of 9 m

C. Lathe Zerbst Dp5000 6 m length between centers and 1.5 m swing over bed Cap. 30T

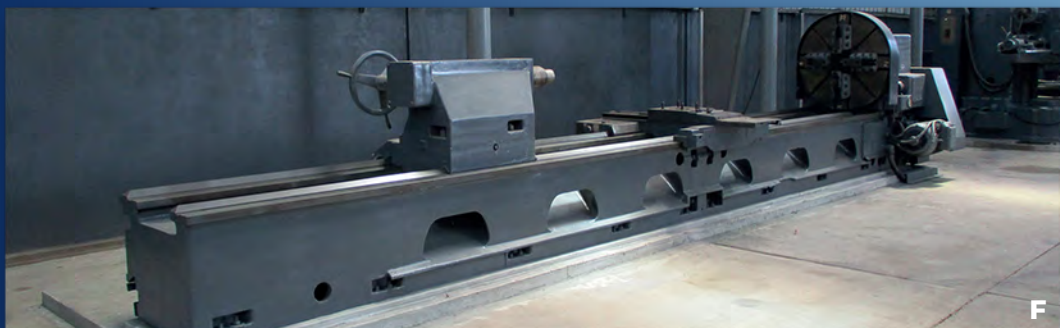


6 | BRIQUETTING MACHINES SERVICES

D. Hydraulic test bench

E. Boring machine Tos Varnsdorf W100a with a table stroke of 3 m

F. Lathe Tos Celakovice Su100 6 m length between centers and 1 m swing over bed, Cap. 10T



6 | BRIQUETTING MACHINES SERVICES

6.1 Briquetting rollers maintenance

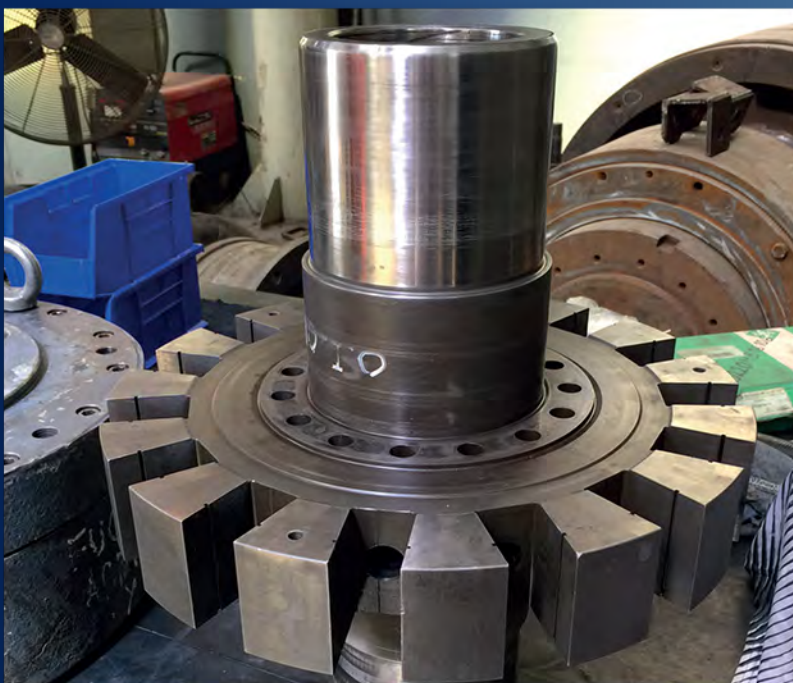
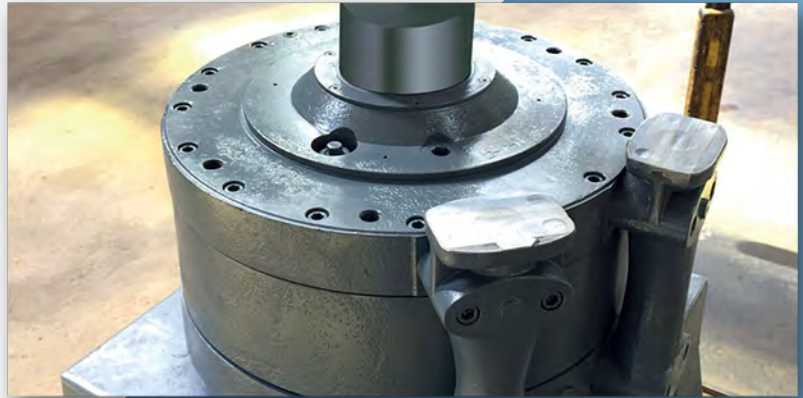
1. Cleaning and preliminary inspection.
2. Disassembly, evaluation, maintenance and assembly of:
 - Rotary union
 - Zapex coupling
 - Rowlock and bearings
 - Clamping rings
 - Segments
 - Pins and cotters
3. Measurement, clearance control and specified tolerance.
4. Hydrostatic test.
5. Hot tensioning torque.
6. Painting, identification and transportation.



6 | BRIQUETTING MACHINES SERVICES

6.2 Hydraulic motors maintenance

1. Cleaning and preliminary inspection.
2. Supply and installation of:
 - Wheels and pistons
 - Bearing kit
 - Shaft seals
 - O'rings
 - Distribution ring
3. Polishing of rotor lateral side and contact side of the distributor ring.
4. Inspection and diagnosis on hydraulic test bench.
5. Painting, identification and transportation.



6 | BRIQUETTING MACHINES SERVICES

6.3 Electrochemical machining

Electrochemical machining, for its acronym in English ECM, applies the electrolysis principle to metal removal.

The high speed of the electrolyte between the tool and the workpiece, drag the metal ions that come off as a result of anodic dissolution. Allowing the machining of hard materials and get burr-free surfaces, fissures and cracks.



6 | BRIQUETTING MACHINES SERVICES

6.4 Test bench for hydraulic motors

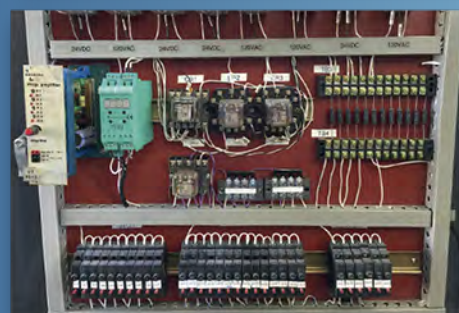
We have a new test bench for hydraulics motors, which was designed to simulate the working conditions that the motor will have in operations.

The pump and motor controller are identical to those used in the feeding system of the briquetting machine.

The unique design of this test bench has advantages that make it stand out over the competition.

These are:

- 1 Motor speed can be adjusted electronically from 0 to 180 rpm during the test.
- 2 Allows automatic control of the motor in both directions (clockwise and counterclockwise).
- 3 Electronic turbine flowmeters measure in real time the engine oil under evaluation.
- 4 Through the use of electronic pressure transmitters, we can constantly monitor the readings in the output and preload lines of the pump.
- 5 Testing is done in two phases, with load and without load. In both cases, the engine is operated at different speeds, measuring in each test the oil flow values and pressure.
- 6 Our test bench has a PLC and its control screen allows to run and register all real-time variables.
- 7 The versatility of our test bench ensures our customers that the motor installed in the field will give the expected performance.



6 | BRIQUETTING MACHINES SERVICES

6.4 Test bench for hydraulic motors

Designed and manufactured by SMB

Test bank components

- 59 GPM BOSCH REXROTH hydraulic pump, identical to one used in most plants for the feeder screw
- Hydraulic valves
- 75 HP electric motor
- 8 digital and analog indicators
- Electronic system and potentiometers to control engine speed
- Built-in oil tank
- Flow and oil pressure transmitters
- Turbine flow meters
- PLC
- Control panel
- Touch screen associated to PLC
- Registration of all test variables and maintenance of the historic of each tested equipment

Hydraulic motor test

The high pressured oil comes out of the pump, enters the motor and pass through of the grooves, seals and rings, lubricating the bearings and mobile parts. The more wear of these parts, the greater drainage will produce, in such way that its value during the test, will indicate us the level of performance of the engine, allowing us to certify their conditions.



6 | BRIQUETTING MACHINES SERVICES

6.5 Other services

Repair of briquettes separator



Repair of hydraulic block



Repair of screwfeeder



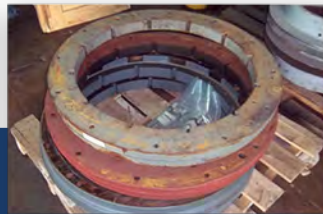
Repair of core



Repair of cheek plates



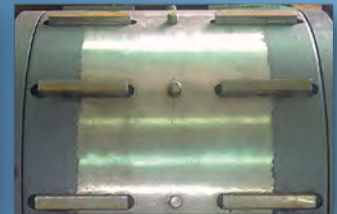
Repair of clamping rings



Repair of rotary joints



Manufacture of pins and keys



6.5 Spare supplies

Bearing housing



Clamping rings



Water cooling pipe



Labyrinth rings



Gaskets and seals



Tension bolts



Keys



Rotary union



7 | REFURBISH OF HYDROELECTRICAL PLANTS

Specialized Mechanical Assembly



7 | REFURBISH OF HYDROELECTRICAL PLANTS

7.1 Turbines

We specialize in the preparation, adjustment and assembly, controlling rotation, centering and leveling, in agreement to specifications techniques of different kind of turbines, plans and manuals.

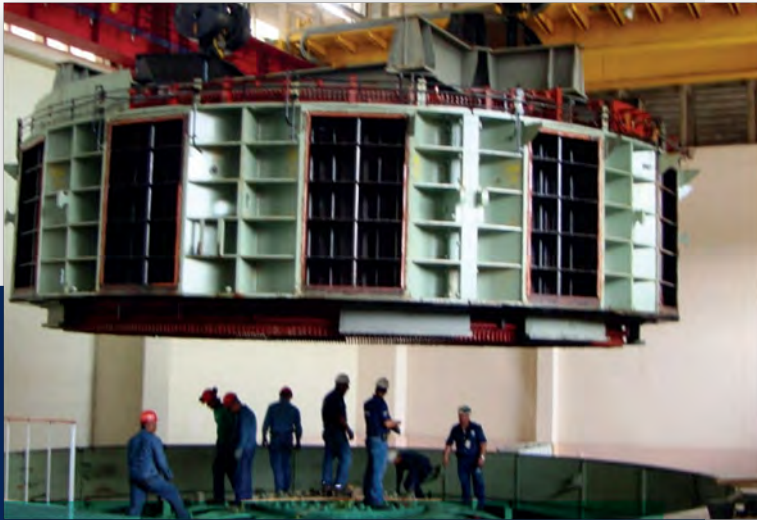
We have the necessary equipment and resources to perform the refurbishment of mechanical elements, when required.



7 | REFURBISH OF HYDROELECTRICAL PLANTS

7.2 Generators

Assembly of the components and main parts of the stators and rotors, keeping specific quality control and following international standards and the procedures defined by the designer.



Stator

Casing, core and winding assembly, following the indications of the technical documentation and reaching rigorous controls of dimensional quality.

Medium voltage tests, to ensure the quality and operation of the generator group.

Rotor

- Preparation, assembly, leveling and protocolization of rotor spider
- Laminated and crown clamp
- Poles: Inspection and dielectrics preassembly tests
- Provisional and definitive assembly
- Measurements and protocolization of assemblies
- Assembly terminals, counterweights, and brake track, among others



7 | REFURBISH OF HYDROELECTRICAL PLANTS

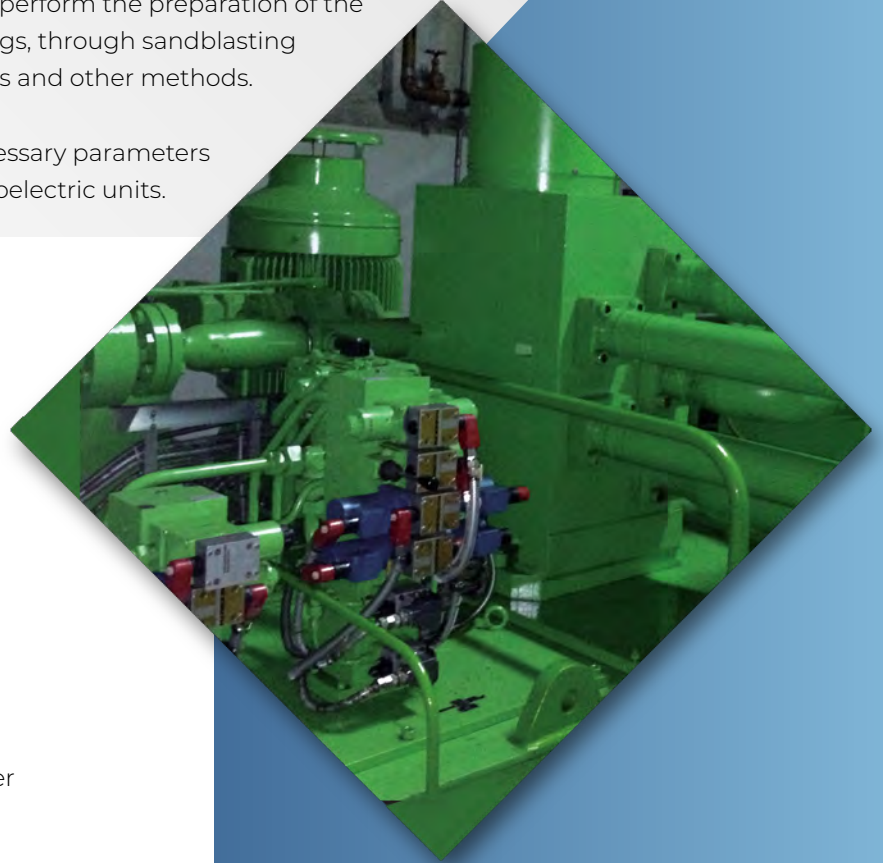
7.3 Auxiliary services

Our company manufactures and installs electrical and mechanical systems, according to costumers plans and specifications. For this, we perform the preparation of the internal and external surface of the pipes and fittings, through sandblasting processes, pickling, flushings, electrical connections and other methods.

Our assemblies are carried out controlling the necessary parameters to guarantee the optimal performance of the hydroelectric units.

Auxiliary mechanical services

- Cooling water system
- Service water system
- Bilge and drain system
- Water / oil separator system
- Compressed air service system
- Lubricating oil treatment system
- Atmospheric air intake system
- Maintenance seal air system
- Pressure equalization air system
- Guide bearing cooling water system
- Shaft seal water system
- Water system for draining the turbine cover
- Pressure tap system
- Brake and hoist system
- Air cooler system
- Combined bearing cooler system
- High pressured oil system
- Oil vapor extraction system
- Brake dust extraction system
- Governor oil interconnection system
- Exciter water supply system



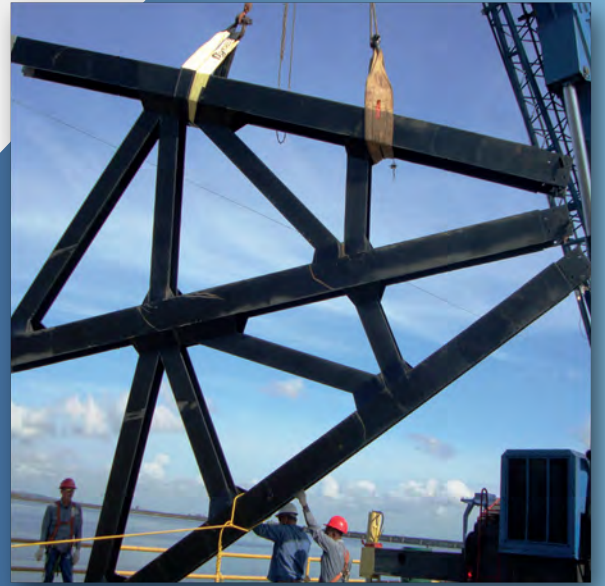
Auxiliary electric services

- Installation and connection of peripheral monitoring devices, generator control and supervision, turbine, governor and other equipment.
- Pre-assembly tests
- Assembly
- Wiring
- Start up
- Dry running tests
- Performance tests with water

7 | REFURBISH OF HYDROELECTRICAL PLANTS

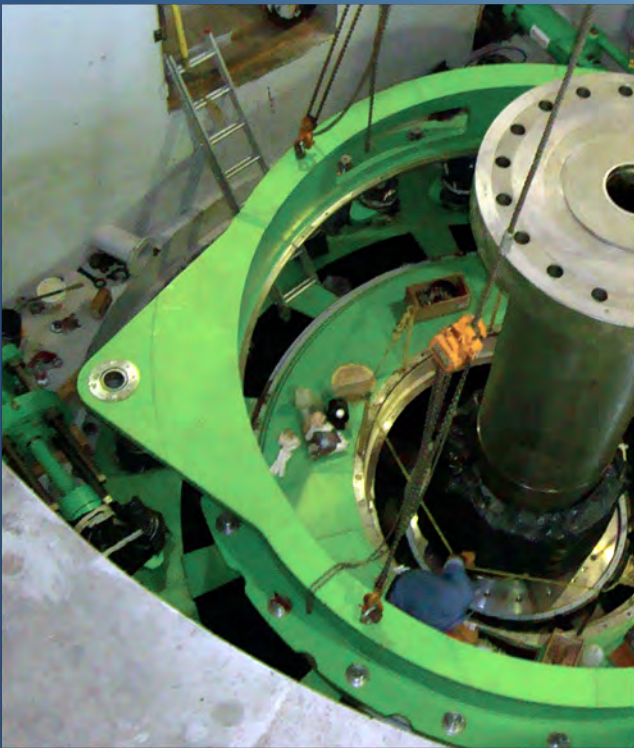
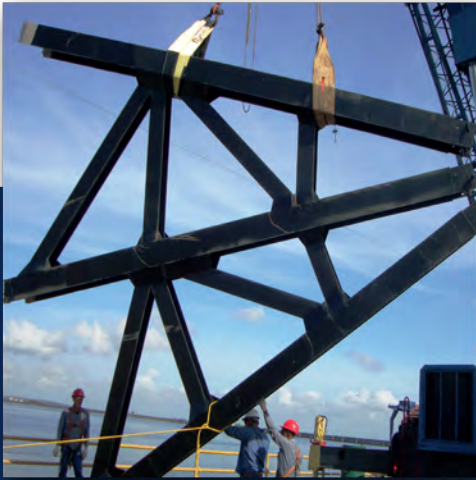
7.4 Hydromechanical system assembly

TIMACA is responsible for its refurbish, including manufacturing, welding and assembly of the necessary parts, as well as the preparation of metallic surfaces, by means of sandblasting, water-blasting and watersandblasting. We also perform hydrodemolition of concrete surfaces and application of high performance coatings, when it is required.



7 | REFURBISH OF HYDROELECTRICAL PLANTS

7.5 Powerhouse refurbish Macagua



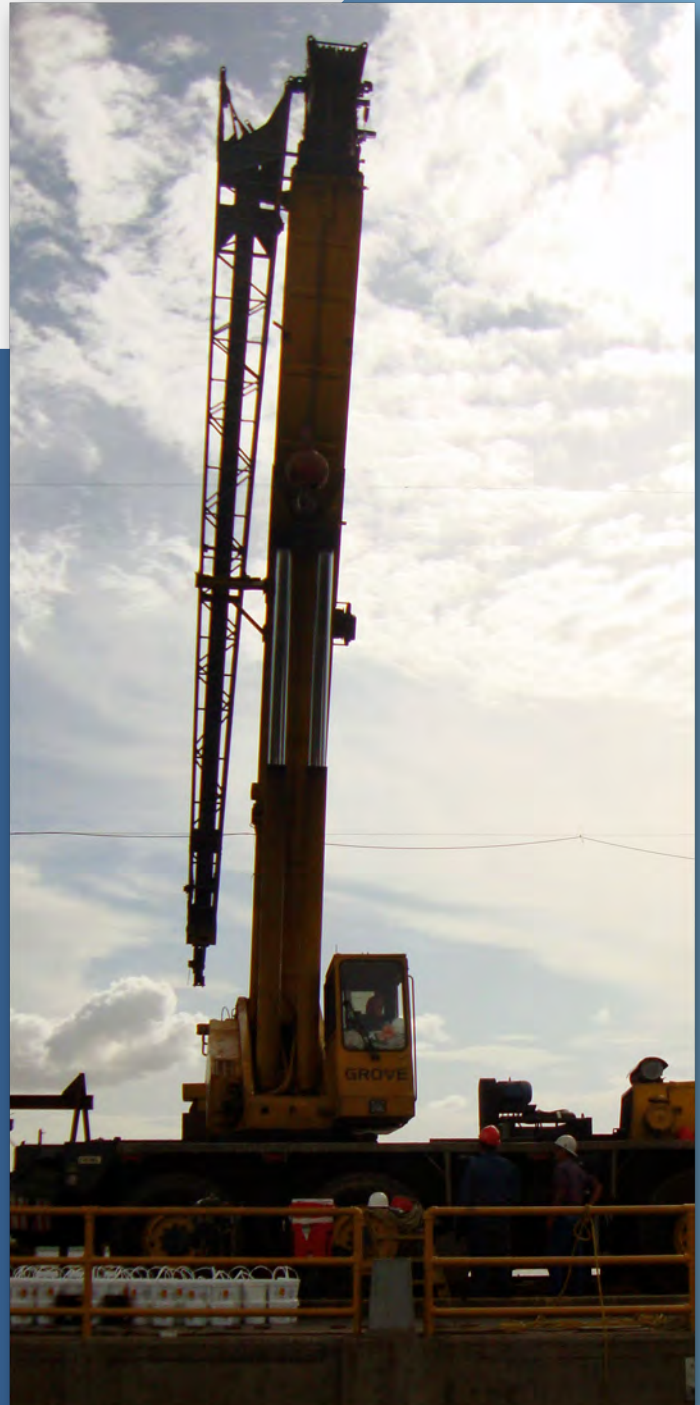
8 | SURFACE PREPARATION

We have cutting-edge equipment and highly qualified technical staff to perform the surface preparation and application of high coating performance, according to the standards of quality control and industrial safety (NACE, SA and SSPC).



9 | LIFTING AND TRANSPORTATION OF SPECIAL LOADS

We count with telescopic cranes and forklifts, for heavy loads, maneuvers and industrial assemblies. Our staff is properly qualified, with current certifications, safety courses and special training. We provide our clients comprehensive advice and the best alternatives to achieve maximum performance in each of our jobs.



9 | LIFTING AND TRANSPORTATION OF SPECIAL LOADS

9.1 Some of our cranes



Grove AT 1400
Max. Cap.: 140 Ton
Max. height Boom: 43 mt
Max. height Tele + Jib: 62 mts

Demag AC-200

Cap. 200 ton
Max. height Boom: 68 mts
Max. height Tele + Jib: 100 mts



Grove TM 890
Max. Cap.: 90 Ton
Max. height Boom: 35 mts
Max. height Tele + Jib: 52 mts



Terex RT 665
Cap. 65 ton
Max. height Boom: 38 mts
Max. height Tele + Jib: 55 mts



Grove AT 685
Max. Cap: 65 Ton
Max. height Boom: 38 mts
Max. height Tele + Jib: 55 mts



Grove RT 865 B
Max. Cap.: 65 Ton
Max. height Boom: 38 mts
Max. height Tele + Jib: 55 mts



Grove RT 755
Max. Cap.: 55 Ton
Max. height Boom: 27 mts
Max. height Tele + Jib: 42 mts



Grove RT 740 B
Max. Cap.: 40 Ton
Max. height Boom: 33 mts
Max. height Tele + Jib: 50 mts

10 | ROTATING EQUIPMENT MAINTENANCE

MAINTENANCE AND REPAIR OF:

- Lobe compressors for process gas.
- Aerxen, Roots, Kobelco screw compressor for seal gas.
- Horizontal and vertical pumps.
- Fans.

Disassembly, restoration of casing, covers and lobes with polymeric compounds, change of sealings and bearings, design and sealing supply, rotor balancing, dimensional verification, assembly, painting and commissioning.



11 | MAIN MACHINERY AND EQUIPMENT

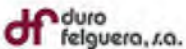
- Horizontal electroerosion ECM Machines.
- Mobile column boring machine Juaristi MDR-110.
- Lathe Zerbst Dp5000 6 m length between centers and 3 m swing over gap Cap. 30T
- Boring machine with a table stroke of 3 m
- Hydraulic test bench.
- Bridge crane 10 ton
- Jib cranes 1.5 ton
- Mobile cranes of 200, 140, 90, 65, 55, 45 and 25 tons.
- Hydraulic press 350 ton.
- Shears Cap. 16mm x 3 meters
- Shears Cap. 10mm x 3 meters
- Sheet metal rolls Cap. ½ "x 2.50 meters
- Sheet metal rolls Cap. 1 "x 3 meters.
- Plasma cutting machine 3mm - 30mm
- Pantograph with optical reader Cap. 2.4m x 6m
- Pantograph with optical reader Cap. 1.8m x 4.2m
- Diesel welding machines
- Welding machines 520 amp.
- Sandblasting and painting equipment
- Sharpeners
- Oxycutting equipment
- Office Containers
- Locker room containers
- Storage containers
- Hoisting equipment and high altitude work
- Flatbed trucks
- Cargo truck with Pickman Arm 1 ton.
- Low boy Cap. 40 tos.
- Low boy Cap. 15 ton.
- Truck 7000 with Pickman arm 2.5 ton.
- Forklift 10.5 and 2 ton.
- Diesel compressor 185, 225, 1050 CFM
- Mobile compressor Cap. 250 cfm
- Winches
- Bench drill
- Vertical drill
- Magnetic drills
- Threading machines
- Beveling machines
- Electric manifold



12 | SOME UNDERTAKEN WORK

AÑO	EMPRESA	DESCRIPCIÓN
2019	SIDOR	MAINTENANCE OF PROCESS GAS COMPRESSORS BRAND ROOTS MODEL 36 X 61
2019	SIDETUR	GENERAL MAINTENANCE SERVICE FOR PLANT STARTING
2019	SAINT GOBAIN	REHABILITATION OF OVEN HEADS PLANT PO2
2018	SIDETUR	DESIGN AND MANUFACTURE OF TIMACA TIM2267 COOLING TOWERS
2018	SAINT GOBAIN	DESIGN AND MANUFACTURE OF BRIDGE HOIST UNIT 25 TON
2017	DELL AQCUA	DESIGN AND MANUFACTURE OF RAIL VEYOR METAL BRIDGES
2017	INCOSTAS	COPAL DOCK DEFENSE RESTITUTION
2017	SAINT GOBAIN	REPAIR OF WALLS FURNACE PLANT PO1
2017	FMO	MANUFACTURE AND ASSEMBLY OF HEAT RECOVERY DUCT OF RING COOLER
2016	FMO	MANUFACTURE AND ASSEMBLY OF SLUDGE TANK
2016	SAINT GOBAIN	CONSTRUCTION OF PREFABRICATED HEADERS
2015	ORINOCO IRON	MAINTENANCE OF BRIQUETE ROLLERS
2015	COMSIGUA	MANUFACTURE AND INSTALLATION OF ROCK LADDER TK - F01.3
2015	COMSIGUA	TK - F98 LOAD HOPPER REPLACEMENT
2014	ALCASA	MANUFACTURE AND INSTALLATION OF ALUMINA DIRECT FEEDING SYSTEM LINE III AND IV
2014	COMSIGUA	TOP GAS OFF TAKE COATING
2014	COMSIGUA	CHANGING THE REFORMER TUBES
2014	COMSIGUA	BF - H06 INTERMEDIATE BURDENFEEDER REPLACEMENT
2013	SIDOR	INSTALLATION OF FRESH AIR SYSTEM TANDEM II
2013	PROPPANTS	CALCINATOR INSTALLATION
2013	PROPPANTS	BALL MILL ASSEMBLY
2012	IMPESA	REHABILITATION OF THE MACAGUA HYDROELECTRIC PLANT 1 UNITS 5 AND 6
2012	ARIVENCA	MAINTENANCE OF DOCK PLANT FERROMINERA PMH
2012	VENPRECAR	MANUFACTURE OF QUENCH TANK TRAYS
2012	ALMACARONI	REHABILITATION OF ASSISTANCE MODULES
2011	SIDOR	MANUFACTURE OF CYLINDERS FOR COILS
2011	DURO FELGUERA	MANUFACTURE OF SUCTION TANKS
2011	DURO FELGUERA	ENCLOSURE OF THE MINERAL CONCENTRATOR BUILDING PLANT FERROMINERA ORINOCO CIUDAD PIAR
2010	PROPPANTS	SINTERIZER ASSEMBLY
2010	VENPRECAR	MANUFACTURE OF SLIDE WEAR PLATES
2010	COMSIGUA	GENERAL PLANT SHUTDOWN
2010	ARIVENCA	FERROMINERA DOCK MAINTENANCE
2009	ORINOCO IRON	MANUFACTURE OF REACTOR GRILL CONES
2009	VENPRECAR	MANUFACTURE OF TRAYS FOR CONVEYOR BELT
2009	VENPRECAR	MANUFACTURE OF TRAY FOR BRIQUETTES SIEVING
2009	FERROVEN	VAT EDGE MANUFACTURE
2009	FERROVEN	MANUFACTURE OF COOLED ELBOWS
2009	OPCO	GENERAL PLANT SHUTDOWN
2008	ICA	CTE CACHAMAY SPORTS COMPLEX MANUFACTURE AND ASSEMBLY
2008	FERROVEN	MANUFACTURE AND INSTALLATION OF SMOKESTACKS

13 | OUR CLIENTS



14 | ENVIRONMENTAL SAFETY AND HEALTH

Our commitment is intended to prevent accidents and occupational diseases, through promotion, maintenance and continuous improvement of the physical, mental and social well-being of our staff, with their active participation in the practices of safe working environment. Based on regulations and laws, both national (COVENIN, LOPCYMAT, LOT) and international (OSHA, NFPA).



15 | QUALITY CONTROL

The QA / QC department consists of a qualified and certified staff, according to ASNT, AWS standards, ASME, ASTM, NACE and SSPC. We count with cutting-edge equipment and instruments, which guarantee the QA.



16 | CONTACT INFORMATION



ADDRESS:

Av. Norte and Sur with Porvenir street,
Matanzas Sur industrial zone,
Puerto Ordaz, Bolívar State - Venezuela

OFFICE PHONE:

+58 286 994.4294

MOBILE:

+58 416 686.6299

+58 414 986.4280

E-MAIL:

timaca@timaca.com.ve

www.timaca.com.ve



TIMACA
TALLER INDUSTRIAL METALÚRGICO ANTONIO, C.A.
J-09500315-6

WWW.TIMACA.COM.VE